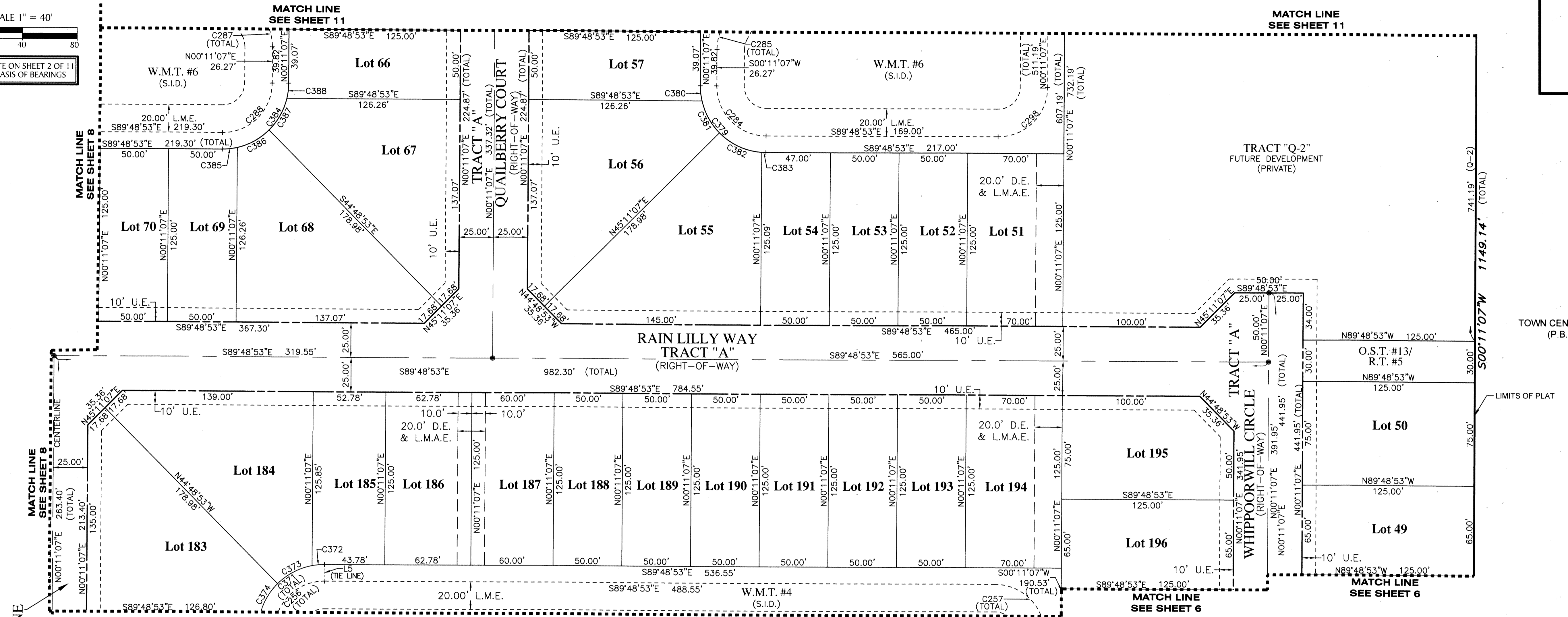
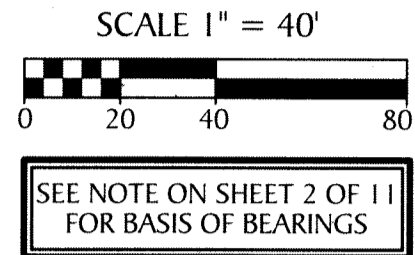
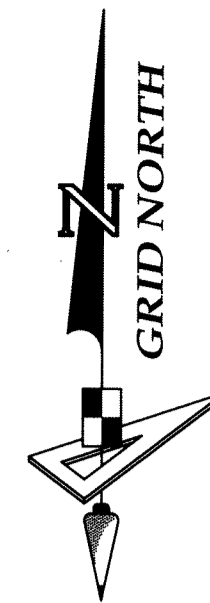


HAMMOCKS OF WESTLAKE

BEING A REPLAT OF TRACT "Q" OF TOWN CENTER PARKWAY NORTH PER PLAT BOOK 123, PAGE 106-118, BEING A PORTION OF SECTION 6, TOWNSHIP 43 SOUTH, RANGE 41 EAST, AND A PORTION OF SECTION 1, TOWNSHIP 43 SOUTH, RANGE 40 EAST, CITY OF WESTLAKE, PALM BEACH COUNTY, FLORIDA



- LEGEND:**
- --- Indicates (P.R.M.) Permanent Reference Monument - 4"x4" Concrete Monument LB7768, unless otherwise noted.
 - ⊕ --- Indicates (P.R.M.) Offset Permanent Reference Monument - 4"x4" Concrete Monument LB7768, unless otherwise noted.
 - --- Indicates (P.C.P.) Permanent Control Point LB7768
 - P.B.C. --- Palm Beach County
 - P.B. --- Plat Book
 - FCM --- Found Concrete Monument
 - O.R. --- Official Records Book
 - (TYP) --- Typical
 - (RB) --- Radial Bearing
 - (NR) --- Non-Radial line
 - (PR) --- Private Road
 - (U.E.) --- Utility Easement
 - (D.E.) --- Drainage Easement
 - C --- Curve
 - L --- Line
 - B.T. --- Buffer Tract
 - O.S.T. --- Open Space Tract
 - W.M.T. --- Water Management Tract
 - L.M.E. --- Lake Maintenance Easement
 - L.M.A.E. --- Lake Maintenance Access Easement
 - L.A.E. --- Limited Access Easement
 - PG. --- Page
 - R.T. --- Recreation Tract
 - S.I.D. --- Seminole Improvement District
 - NAD --- North American Datum
 - LB --- Licensed Business
 - P.S.M. --- Professional Surveyor and Mapper
 - 1/4 --- One Quarter
 - R --- RADIUS
 - L --- ARC LENGTH
 - D --- DELTA-CENTRAL ANGLE

NO.	RADIUS	DELTA	ARC	CHORD	BEARING
C256	36.00'	090°00'00"	56.55'	50.91'	N 45°11'07" E
C257	36.00'	090°00'00"	56.55'	50.91'	S 44°48'53" E
C284	36.00'	090°00'00"	56.55'	50.91'	S 44°48'53" E
C285	36.00'	029°43'27"	18.68'	18.47'	S 15°02'50" W
C287	36.00'	029°43'29"	18.68'	18.47'	N 14°40'37" W
C288	36.00'	090°00'00"	56.55'	50.91'	N 45°11'07" E
C298	36.00'	090°00'00"	56.55'	50.91'	N 45°11'07" E
C371	48.00'	090°00'00"	75.40'	67.88'	S 45°11'07" W
C372	48.00'	010°48'25"	9.05'	9.04'	S 84°46'55" W
C373	48.00'	034°11'35"	28.65'	28.22'	S 62°16'55" W
C374	48.00'	029°16'52"	24.53'	24.26'	S 30°32'41" W

NO.	RADIUS	DELTA	ARC	CHORD	BEARING
C379	48.00'	090°00'00"	75.40'	67.88'	S 44°48'53" E
C380	48.00'	013°09'39"	11.03'	11.00'	S 06°23'43" E
C381	48.00'	031°50'21"	26.67'	26.33'	S 28°53'43" E
C382	48.00'	041°24'46"	34.69'	33.94'	S 65°31'16" E
C383	48.00'	003°35'14"	3.01'	3.00'	S 88°01'16" E
C384	48.00'	090°00'00"	75.40'	67.88'	N 45°11'07" E
C385	48.00'	013°09'39"	11.03'	11.00'	N 83°36'17" E
C386	48.00'	031°50'21"	26.67'	26.33'	N 61°06'17" E
C387	48.00'	031°50'21"	26.67'	26.33'	N 29°15'57" E
C388	48.00'	013°09'39"	11.03'	11.00'	N 06°45'57" E

NO.	BEARING	LENGTH
L5	S 00°11'07" W	12.00'

